

Glenloch View | Achintore Road

In an idyllic setting on Fort William's "Golden Mile", Glenloch View provides the ideal situation for today's lifestyle. Just a short distance from town centre amenities yet with unspoilt views across Loch Linnhe and the Ardgour peninsula, the location couldn't be better.

Fort William is the largest town in the West Highlands and the commercial centre of Lochaber. Big enough to provide everything modern life demands, the town still retains a friendly local feel. Superb scenery, Highland culture, Ben Nevis, mountains, lochs and rivers, unspoilt beaches, castles, distilleries, outdoor sports year round...Fort William and Lochaber have it all.

Each home at Glenloch View benefits from individually allocated parking while, for those who prefer to dispense with the car, there is a nearby bus service and Fort William is directly connected to the national rail network. As with all our developments, the tastefully landscaped grounds and other communal areas will be maintained by our dedicated management company, leaving you free to relax and enjoy the surroundings.



GLENLOCH VIEW VIEW, ACHINTORE ROAD, FORT WILLIAM PH33 6RW

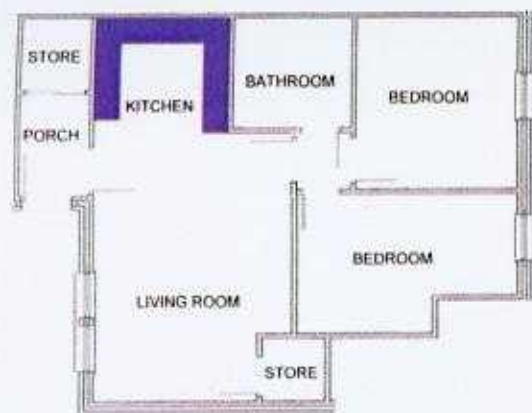
A development of 18 prestige homes in three 2-storey buildings with private grounds and parking.



Typical ground floor layout A



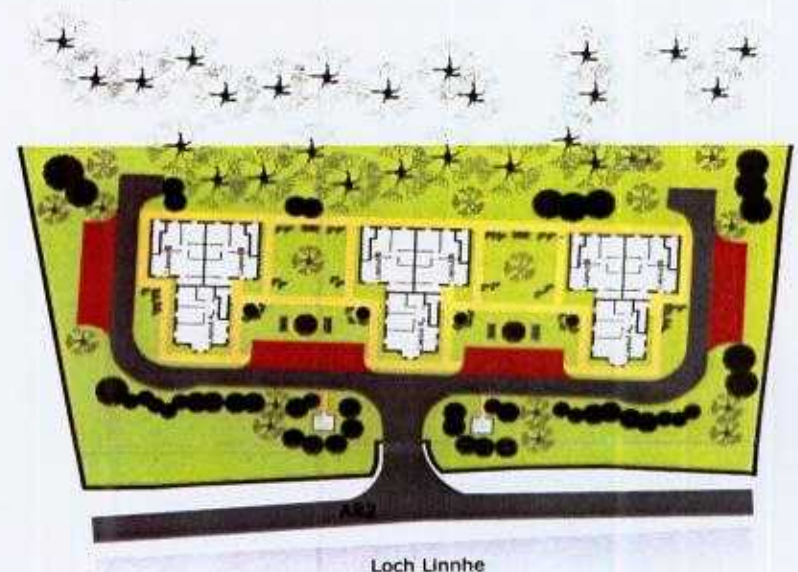
Typical first floor layout A



Typical ground floor layout B



Typical first floor layout B



APPROXIMATE DIMENSIONS TYPE A

Living room/kitchen 7.25 x 4.52
Bedroom 1, GF 3.8 x 2.6m
Bedroom 1, FF 3.4 x 2.7m
Bedroom 2, GF 3.1 x 2.6m
Bedroom 2, FF 3.4 x 3.1m

APPROXIMATE DIMENSIONS TYPE B

Living room/kitchen 7.53 x 3.95
Bedroom 1, GF 3.4 x 3.2m
Bedroom 1, FF 3.4 x 3.2m
Bedroom 2, GF 4.4 x 2.8m
Bedroom 2, FF 3.7 x 2.9m

At Holme Park we believe there is no substitute for quality

Our homes typically include the following:

Bathroom

The perfect place to enjoy a relaxing soak, our bathrooms feature:

- Bathroom suite in white with dual-flush WC
- Full size bath
- Fully tiled walls*
- Toughened glass shower screen
- Mains pressure bath shower mixer

Living Kitchen

The heart of the home, our kitchens are designed with convenience, efficiency and quality in mind. Features include: *

- Ceramic hob and stainless steel extractor hood
- Integrated fan oven/grill
- Stainless steel sink with drainer
- Wide breakfast bar
- Underlighting to wall units
- Integrated washer/dryer
- Integrated fridge with icebox
- Integrated dishwasher

General

All developments benefit from individually landscaped grounds maintained by a dedicated team of gardeners.

- Allocated private parking
- External lighting throughout the grounds
- Panelled internal doors with bright chrome furniture
- uPVC double glazing with thermal coated glass throughout
- Excellent insulation integrated in the structure
- Discreet utility & waste facility
- French doors with Juliet balcony to first floor homes

You can be sure of attention to detail in a Holme Park home.



Electrical

A range of electrical features* will be provided when you move into your new home.

- Plug-and-go TV point to lounge
- Telephone line to lounge and bedroom
- Fully programmable heating and hot water
- Mains wired smoke or heat detectors
- Low energy lighting to secondary rooms
- Plentiful double sockets throughout

* Specification may vary between plots, please ask your sales advisor for details.

